

WORKS ROHWAJEONG



Still life

2017

Mosquito net, white cotton thread

Variable dimensions

Unique piece

Installation in Nohwa Island, Wando, South Korea

Documentary video, color, sound, 01'01''



Still life

2017

Mosquito net, white cotton thread

Variable dimensions

Unique piece

Installation in Sonenan, Kyoto, Japan

Documentary video, color, sound, 3'08"



Cutting boards

2017

Three used wooden cutting boards

Variable dimensions

(each 15 x 18 cm, 16 x 27 cm, 16.5 x 54 cm)

Unique pieces



Chin - up bar

2017

Prints on the PVC canvas, chin-up bars

Variable dimensions

Unique pieces

Installation in Suomenlinna, Helsinki, Finland

Documentary video, color, sound, 0'23"



Grocery list

2017

Paper, wooden free-standing wall

528 x 240 cm

Unique piece



Chair Chair Egg

2017

Chairs found around HIAP of Suomenlinna, egg

Variable dimensions (approx 70 x 55 x 80 cm)

Unique piece



60° 08° 34° N 24° 58° 58° E 52M

2017

Pastel drawing on the paper, tracing paper, second-hand wooden frame

21.8 x 26.5 cm

Unique piece



Folding screen

2017

Color MDF board, mesh, hinge
Variable dimensions (max 140 x 51 x 2 cm)

Unique piece



Folding screen

2017

Birch square lumber, tennis ball, hinge, tracing paper has pencil drawing

Variable dimensions (max 170 x 92.5 x 6.7 cm)

Unique piece



Two-Lines

2016

Pencil drawing on tracing paper, two glasses, walnut wooden frame

29.7 x 42 cm

Unique pieces



Neon

2016

Neon, leaf plant, 3 mm plywood, urethane casters

30 x 120 x 60 cm

Unique pieces



Velvet ball (Drawing)

2016

Pencil and oil pen drawing on the butter paper

29.7 x 21 cm

Unique pieces



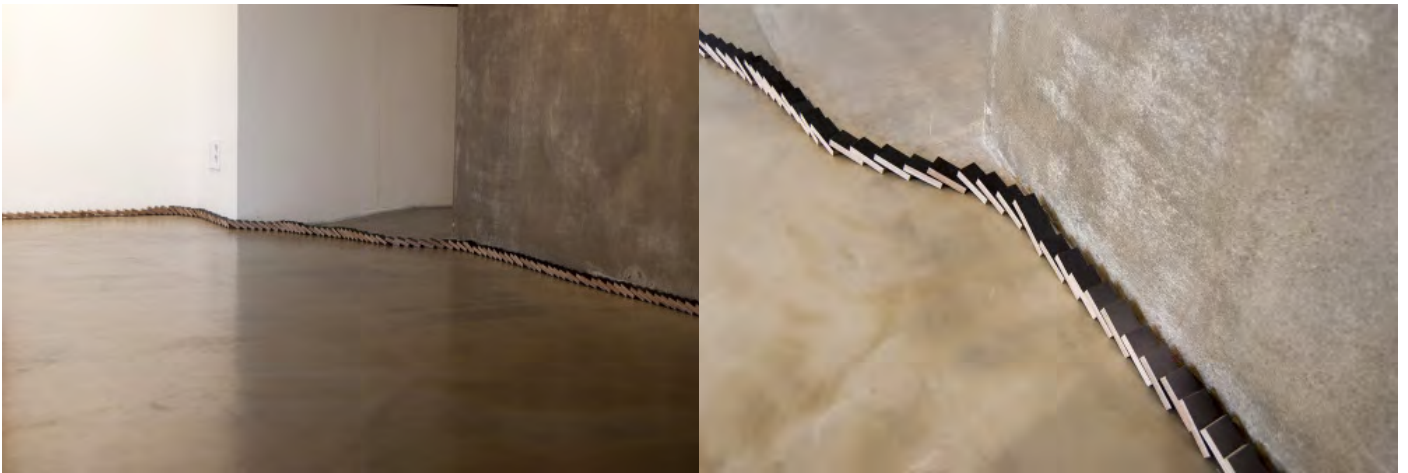
Velvet Ball

2016

Velvet, rubber ball

35 x 35 x 60 cm

Unique piece



Domino

2016

Plywood for concrete mould, 12 mm thick

Variable dimensions

Unique pieces



Self portrait 2016

2016

Brass, chain

Variable dimensions

Unique pieces

Documentary video in Daegu Art Factory, Daegu, South Korea, sound, color, 0'34"



Framed Play

2016

Korean sugar candy

Variable dimensions

Unique pieces

Photos © Junyong Cho



Framed Play

2016

Pigment print on photographic matt paper

84.2 x 59.5 cm

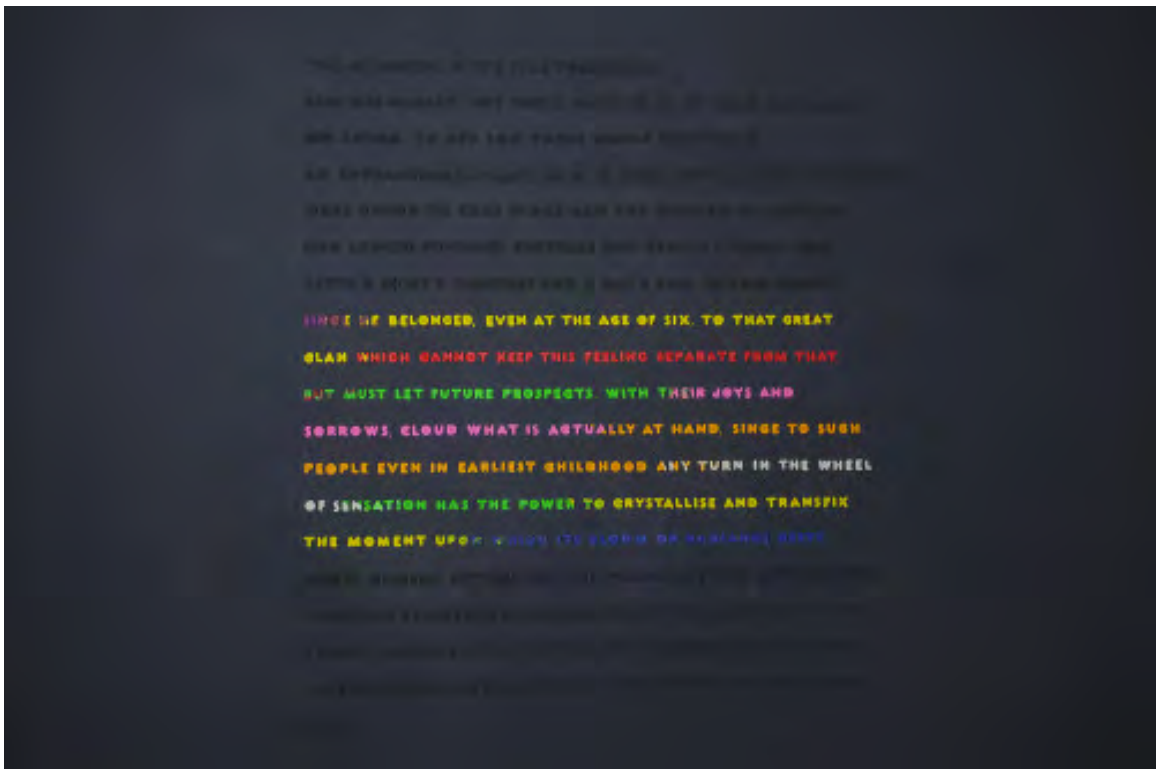
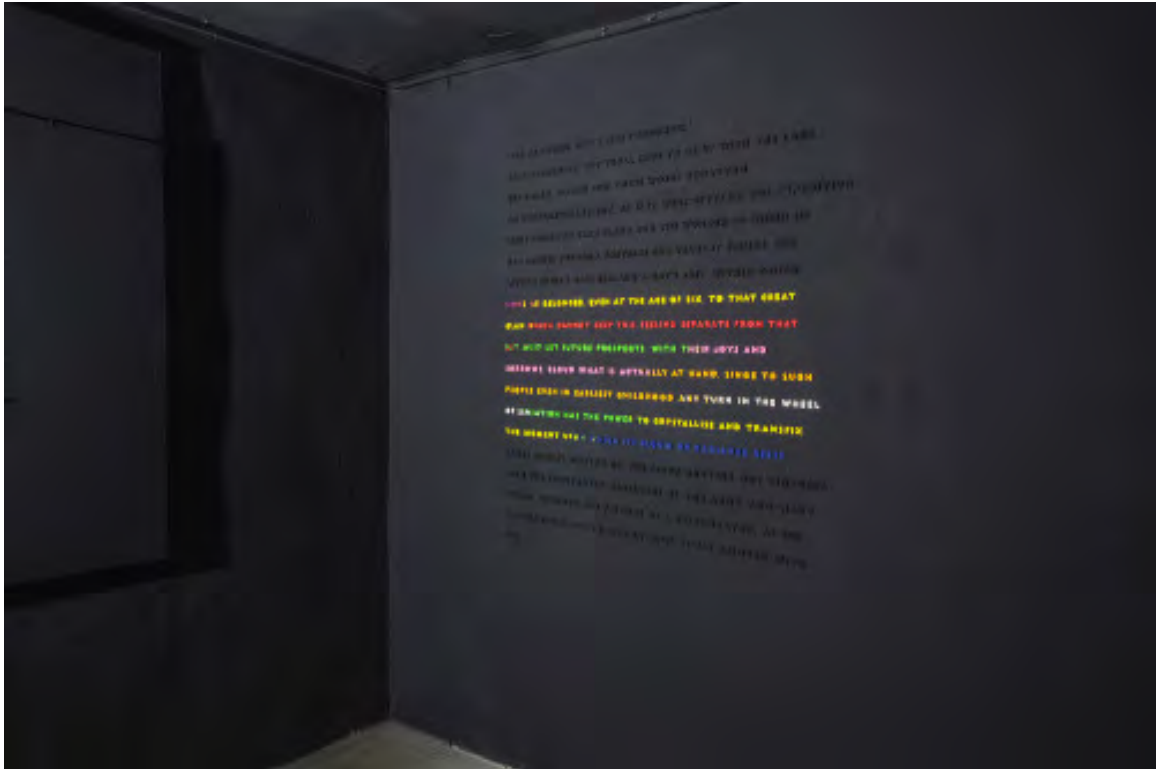
Unique piece



Framed Play

2016

Single channel video, color, sound, 01'01"



Framed Play

2016

Play-doh clay, first page of *To the Lighthouse* by Virginia Woolf

Variable dimensions

Unique pieces

Photos © Junyong Cho



Framed Play

2016

Watch, nail, PIEZO contact microphone, sound reinforcement mixer, speaker

Variable dimensions

Unique pieces

Photos © Junyong Cho

Documentary video, color, sound, 0'25"



Play in the Frame

2016

Fly ash bricks, white cement, monitor playing a
single channel video

Variable dimensions

Unique pieces

Photos © Junyong Cho



Play in the Frame

2016

Single channel video, color, sound, 05'05"



Play in the Frame

2016

Pigment print on canvas

Variable dimensions

Unique pieces

Photos © Junyong Cho



Play in the Frame

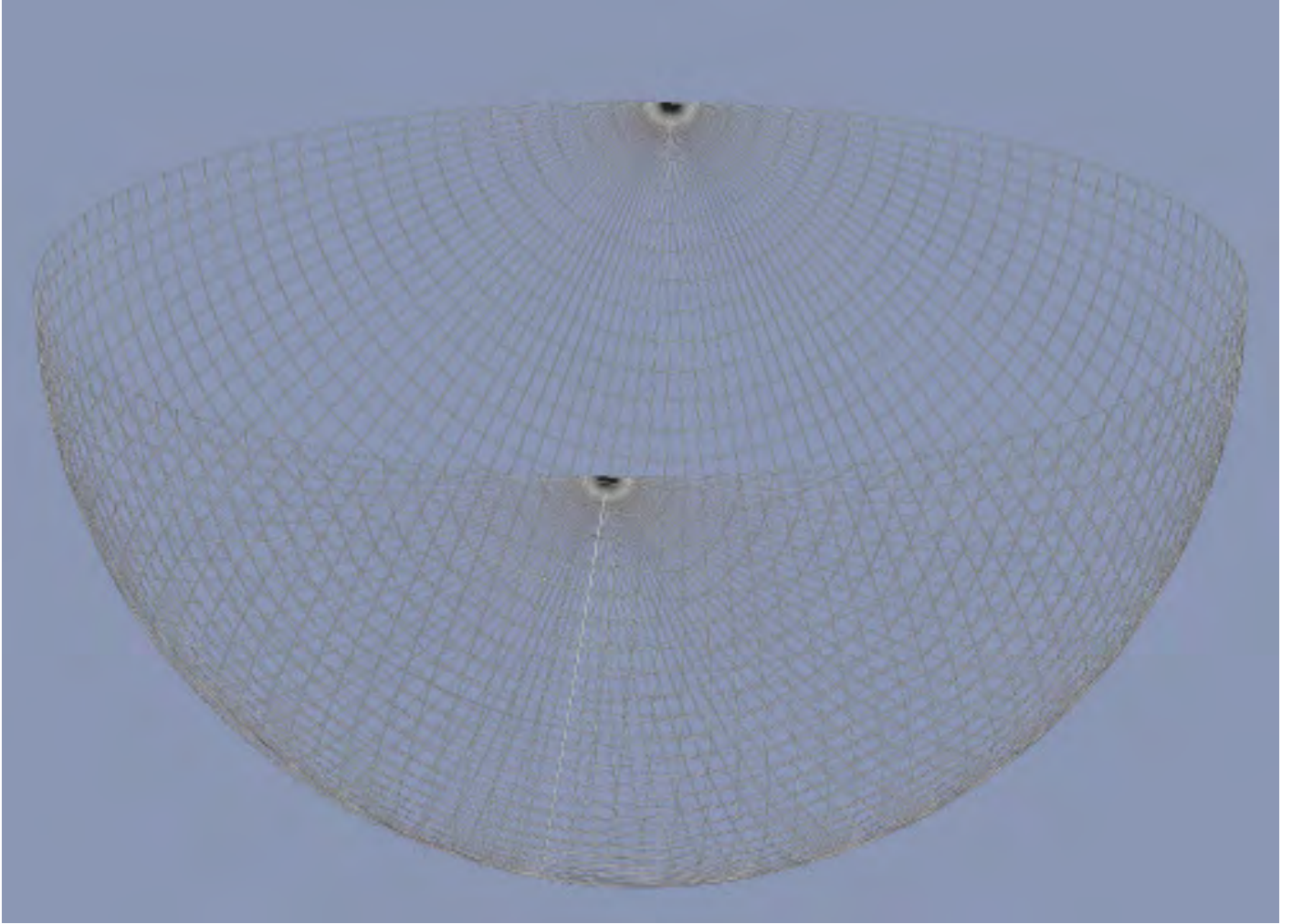
2016

Papers, chewing gums on a glass wall

Variable dimensions

Unique pieces

Photos © Junyong Cho



Play in the Frame

2016

Acrylic on paper, C-print on paper

78.8 x 109 cm each

Unique pieces



Play in the Frame

2016

Acrylic on canvas, clip

Variable dimensions (original canvas size : 34.4 x 54.6 cm)

Unique pieces



Play in the Frame

2016

Acrylic on rolled paper, 3 mm plastic sheet
Variable dimensions (original paper size 78.8 x 109 cm)
Unique pieces



Play in the Frame

2016

Acrylic on wooden panel

Variable dimensions (each 78 x 78 cm, circle 88 cm diameter)

Unique pieces

Photos © Junyong Cho



Momentous

2016

Chewing gum, C-print on paper
Unique pieces



Momentous

2016

Single channel video, color, sound, 01'37"



A Hole on the Parchment, End Detour, Ita Est

2016

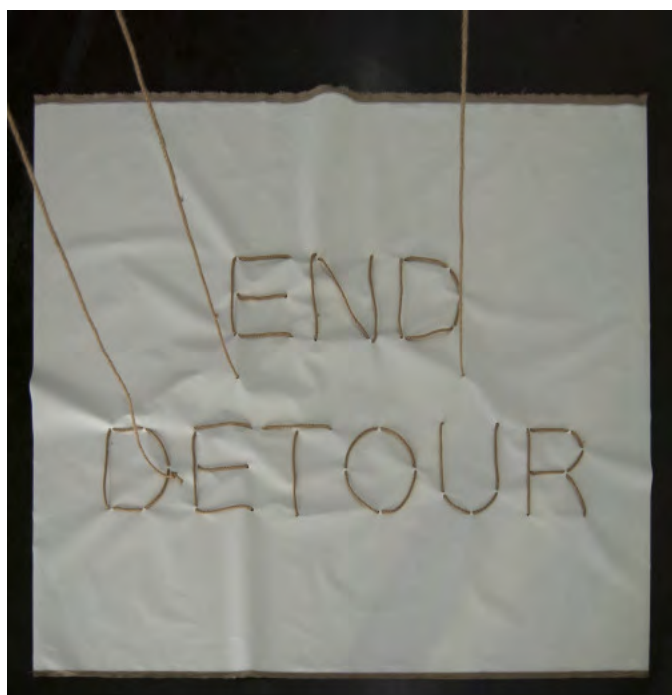
Canvas, rope

140 x 200 cm (A Hole on the Parchment)

140 x 160 cm (End Detour)

140 x 140 cm (Ita Est)

Unique pieces





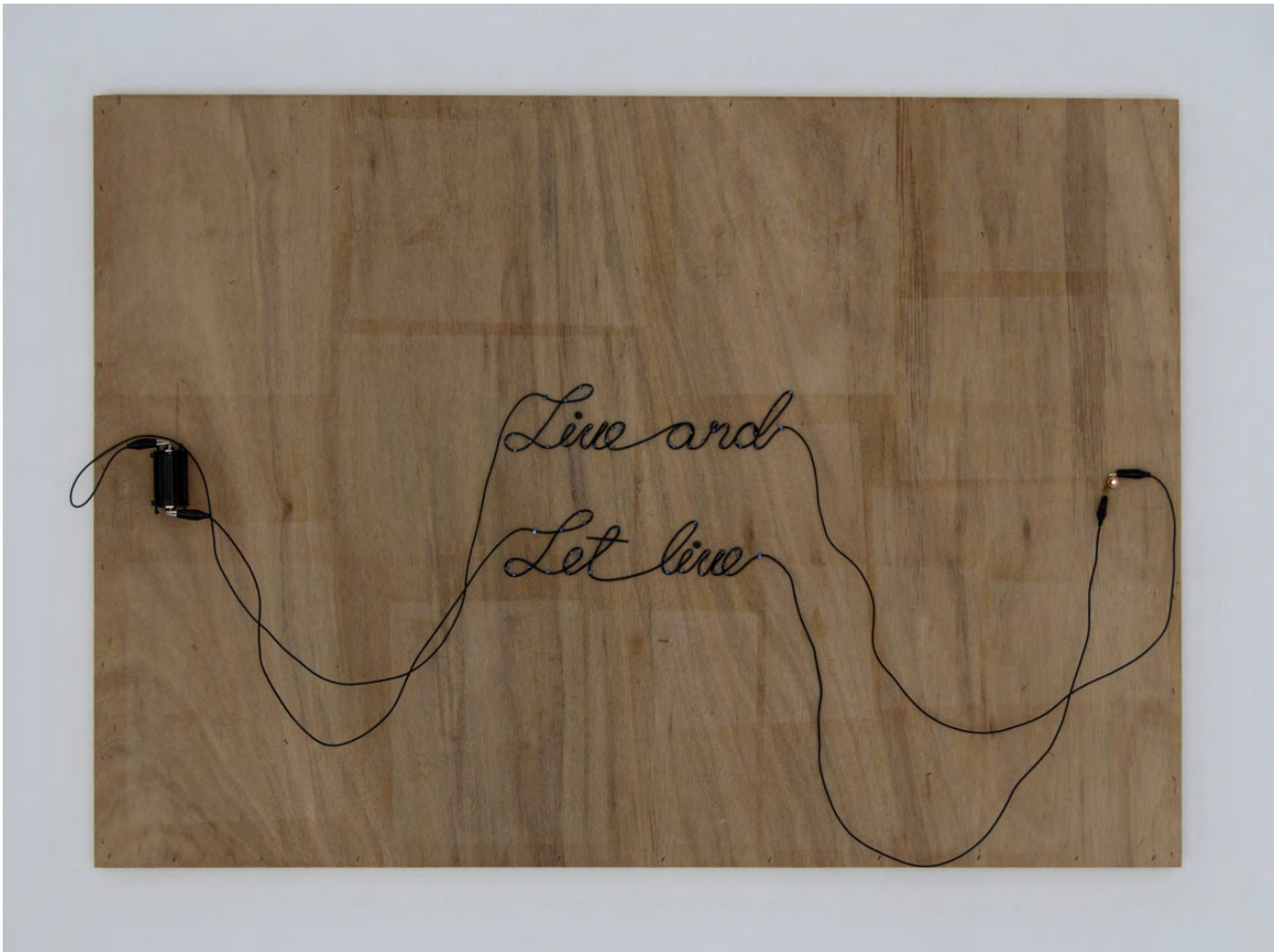
A Hole on the Parchment, End Detour, Ita Est

2016

Documentary video, color, sound, 07'35''

Shooting : Guillaume Loiseau

Shooting place : La Compagnie, Marseille, France



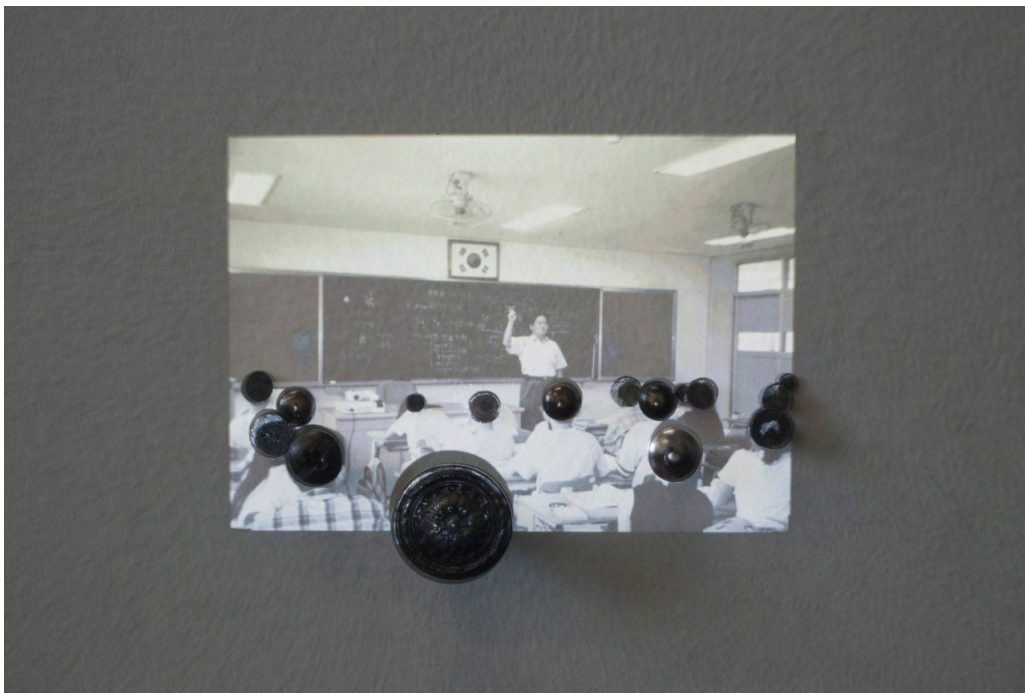
Live and let live

2015

Electric wire, nails, miniature light bulb, crocodile clip, battery, wood panel

73 x 103 cm

Unique piece

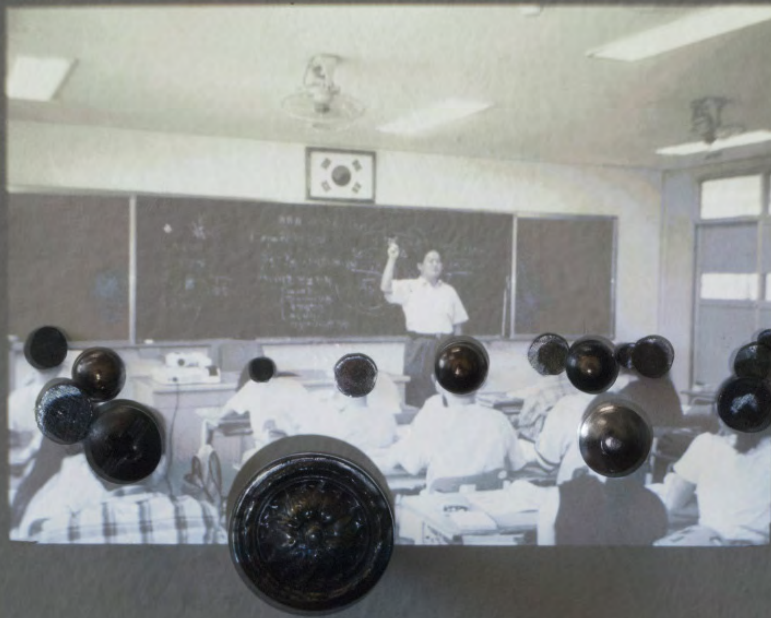


Variable Dimensions

2015

Nails, screws, tripod, portable beam projector

60 x 65 x 110 cm



Variable Dimensions

2015

Documentary video



Good answer

2015

Canvas, rope, milk, hardwood square dowels

190 x 290 x 40 cm

Unique piece



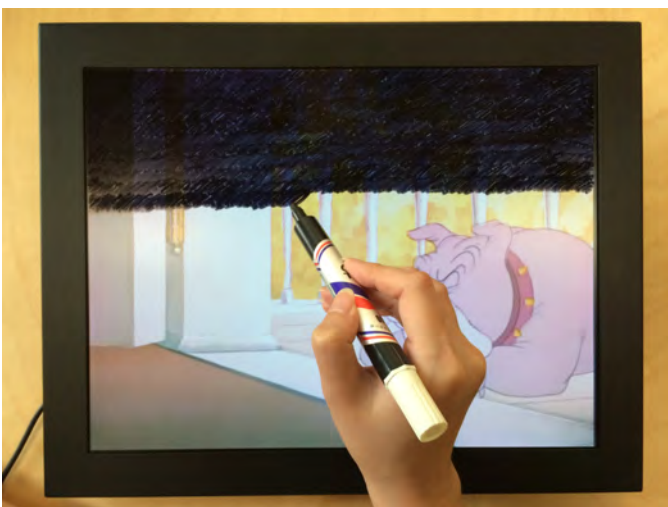
Frame

2015

Rotten timber, sandpaper, non-reflecting glass

27 x 32 cm

Unique piece



Drawing

2015

14" LCD monitor equipped with DivX player, desk of
elementary school
60 x 40 x 76 cm
Unique piece



Space drawing (Do not agree)

2015

Installation, masking tape

Variable dimensions



The pieces from the street

2015

Single channel video loop, black and white, sound

04'19"

Edition of 5 + 2 AP



The pieces from the street

2015

Video installation in Art Space Boan, Seoul, South Korea

Photo © Daenam Kim



Triangles

2015

Installation, wire, rebar

Variable dimensions

Photo © Daenam Kim



Triangles

2015

Video installation in Art Space Boan, Seoul, South Korea



The Ghost

2015

Pencil drawing on the wall

Variable dimensions

Photo © Daenam Kim



The Ghost

2015

Pencil drawing on the wall

Variable dimensions

Photo © Daenam Kim



Space drawing (Shadows)

2015

Installation, masking tape
Variable dimensions



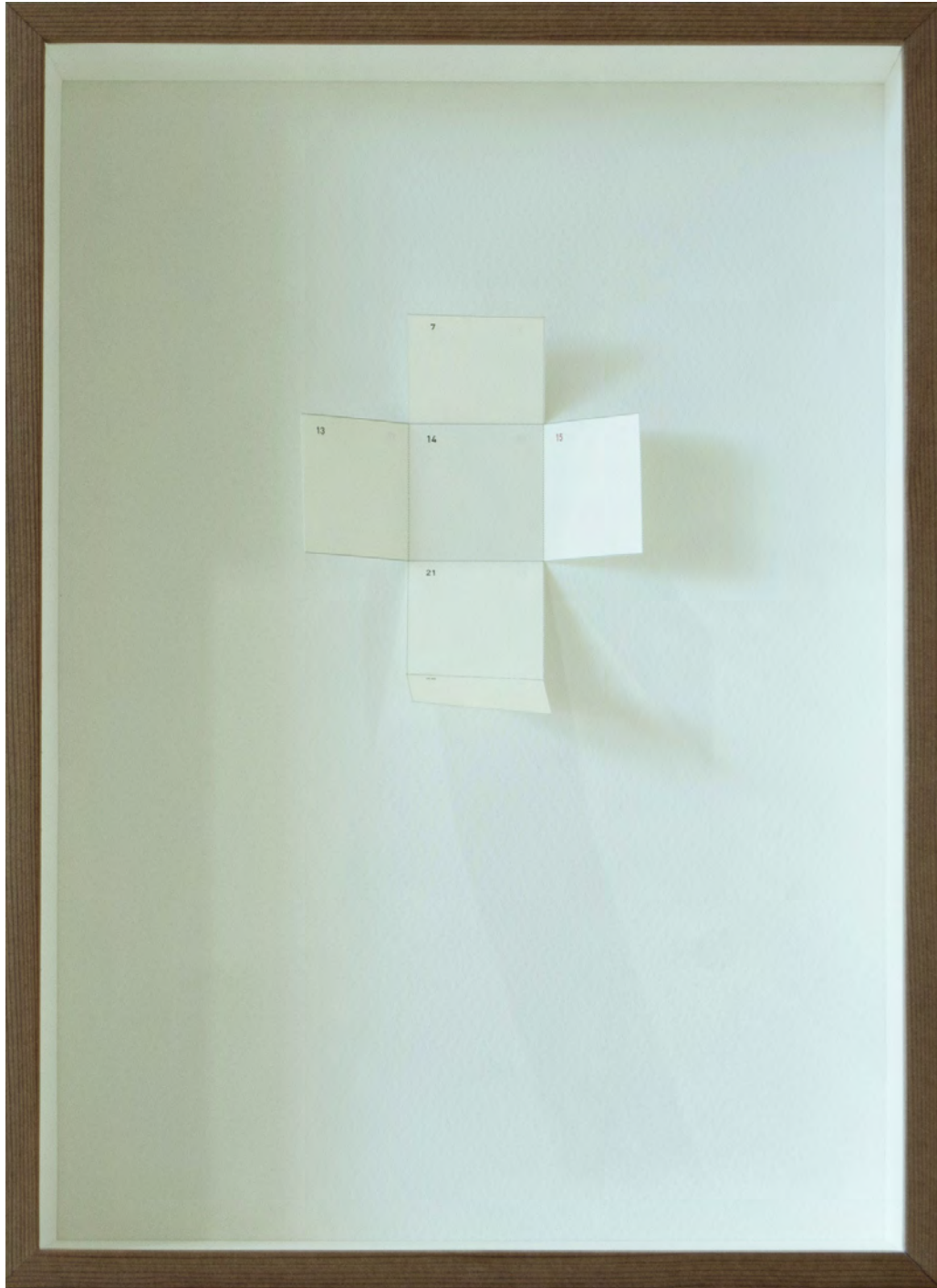
Space drawing (Cause and Effect)

2015

Installation, masking tape

Variable dimensions

Photo © Heesung Chung



Diary
2015

Paper cut from a schedule note planner, wooden frame, non reflective glass
23 x 31 cm
Unique piece



The equality of doing and not doing

2015

Neon on the wall of Korean traditional house

400 x 70 cm

Unique piece

World Script Symposia 2015 Art project, Tongui-dong, Seoul, South Korea



The moment never stops

2015

Blanket used by a Ferry Sewol disaster victim's family,
compression bag for the blankets, watch

50 x 80 cm

Unique piece



Manual

2015

Grease pencils, pedestal, box, melted wax
Text made by paper peels from the grease pencils
Variable dimensions

Unique piece

Installation view in BIFT Exhibition hall, Beijing, China

galerie dohyanglee



Under the rainbow
2015
Postal stamps
4 x 3 cm each
Edition of 14



One seconds

2015

Sound installation, 2 speakers, compact cassette tape, compact cassette tape player

Loop documentary

60'00"



Melting

2015

Single video channel loop, color
50'00''



One seconds & Melting

2015

Documentary

for the exhibition *The idea of North: Schizo-geography* at
Amado art space, Seoul, South Korea



() Promenade - folding screen

2014

in Changdeok Palace, Seoul, South Korea

Eight-fold folding screen, variable dimensions

Unique piece



() Promenade - folding screen

2014

in Changdeok Palace, Seoul, South Korea

HD video documentary, sound, color

Collaboration with Park Minhee

Performance : Park Minhee & Lee Kipum (Gagok), Kim Bongyoung (Pansori), Jeon Songa (Soprano), Jang Hongseok (Dance), Filming : Kim Junseong, Direction : Park Minhee



() Promenade - frame#3 (Giyeok Nieun frame)

2014

in Changdeok Palace, Seoul, South Korea

Wooden frame, 50 x 50 x 160 cm

Unique piece



() Promenade - frame#2 (windy)

2014

in Changdeok Palace, Seoul, South Korea

3mm thick plywood, fishing line, speaker, sound, variable dimensions

(frame : 40 x 40 cm)

Unique piece



() Promenade - frame#2

2014

in Changdeok Palace, Seoul, South Korea
HD video documentary, sound, color



() Promenade - frame#1

2014

in Changdeok Palace, Seoul, South Korea

Wooden picture frame, tripod, speaker, sound, variable dimensions (frame : 180 x 100 cm)

Unique piece



() Promenade - frame#1

2014

in Changdeok Palace, Seoul, South Korea
HD video documentary, sound, color



Winter 2014, Seoul.

Bubble Lab is an artistic film made for the individual exhibition in the Gallery Factory, This distance, and designed for the exhibition's thema. The subject is focused on the elements around art, describing the stages of the assembling and displaying the many tools used for the making of an exhibition, as art pieces. *Bubble Lab* deals with the wrapping and the transportation of the works.

Throughout the beginning and the end of the work, we see that *Bubble Lab* describes the stages from the wrapping in the artist's workshop, through its transportation until the unwrapping inside the exhibition space. However if the spectator doesn't see the beginning nor the end of the video, he might think the screen is out of function, or this work is abstract and monotonous.

When the artwork is wrapped, the screen goes white, because of the numerous layers of bubble lab, while the screen goes black when it is transported inside a truck whose doors are closed, until the arrival in the exhibition space. The last scene shows the unwrapped artwork and the space used for the exhibition.

In the middle of the conversation between the artist and the shipper, appears a cathodic TV screen, that sets in motion the artwork. That TV seems to look at the artwork it will receive.

Through this trick, and this mise en abime, the artwork is displayed in this TV, and having a physical body, it seems to look in a mirror, that reflects its past state.

Bubble Lab

2014

Video, 16 : 9 format, color, sound

72'48''

Edition of 2 + 2AP



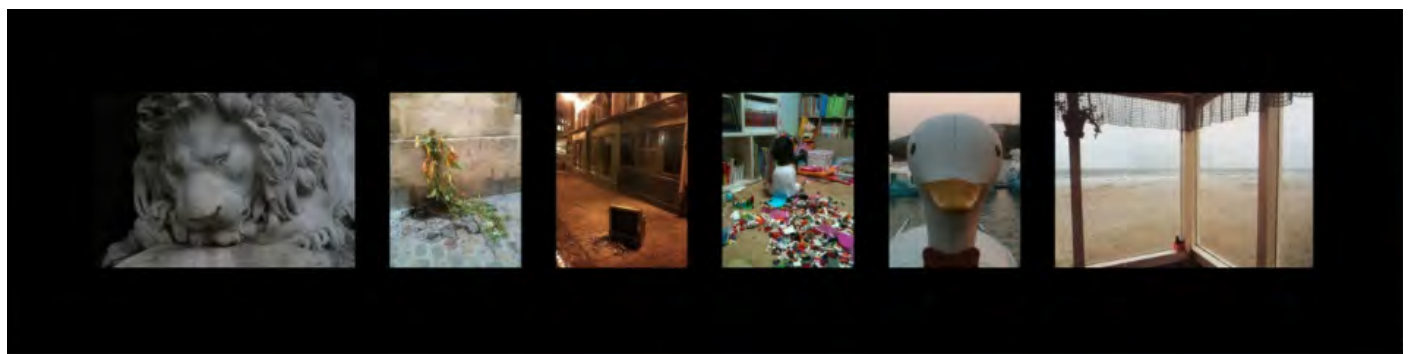
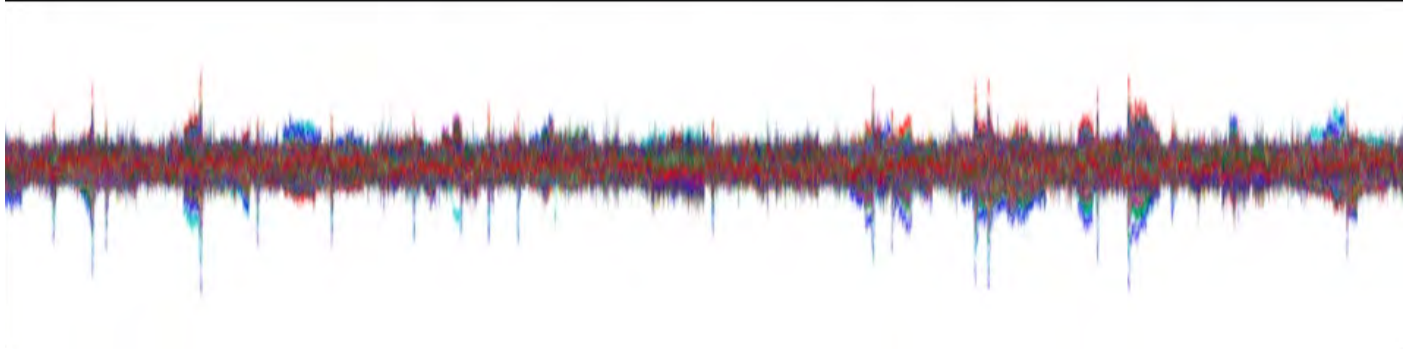
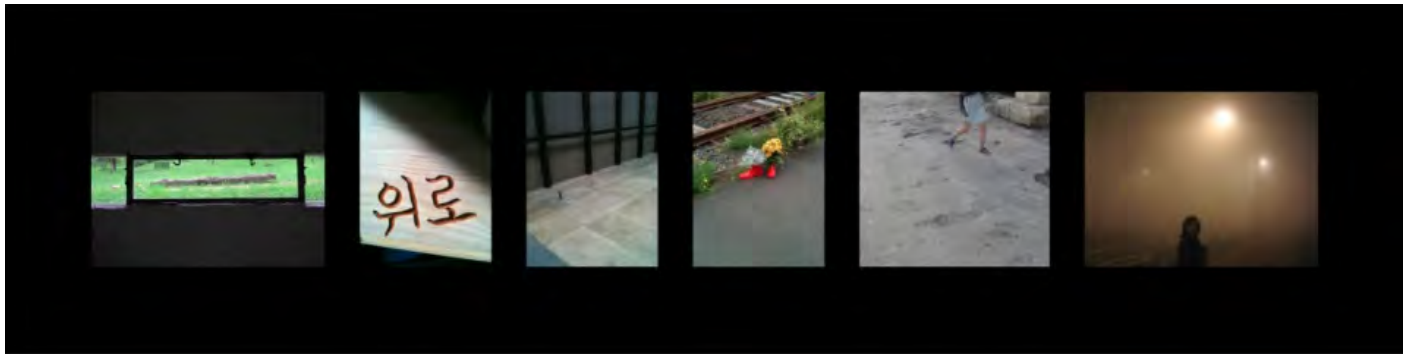
The channels of four hundred fifty six - outside

2014

Magnetic photos on a cargo container

300 x 600 x 200 cm

Unique piece

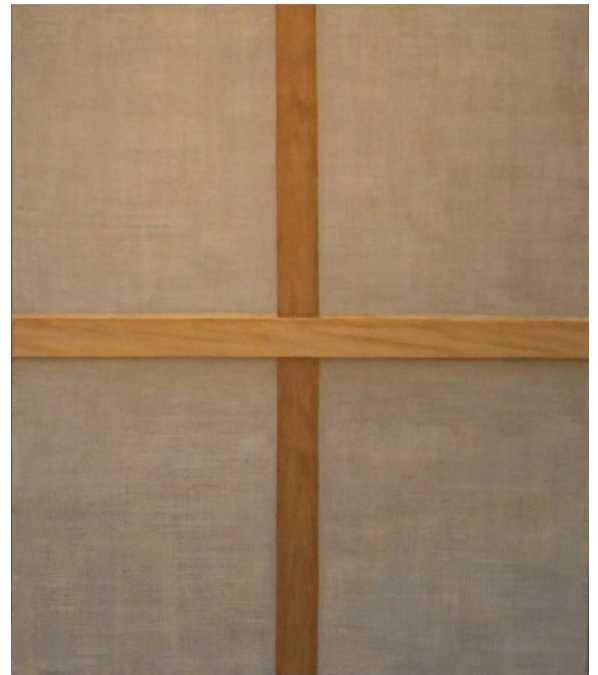




The channels of four hundred fifty six - inside

2014

Documentary pigment print of MEG, low speed motor lighting
Variable dimensions



Rear view, one side

2014

Oil/acrylic on 20F canvas, hardwood square dowels

66 x 40 x 123 cm

Unique pieces



Rear view, the other side

2014

Oil/acrylic on 30F canvas, hardwood square dowels

80 x 50 x 140 cm

Unique pieces



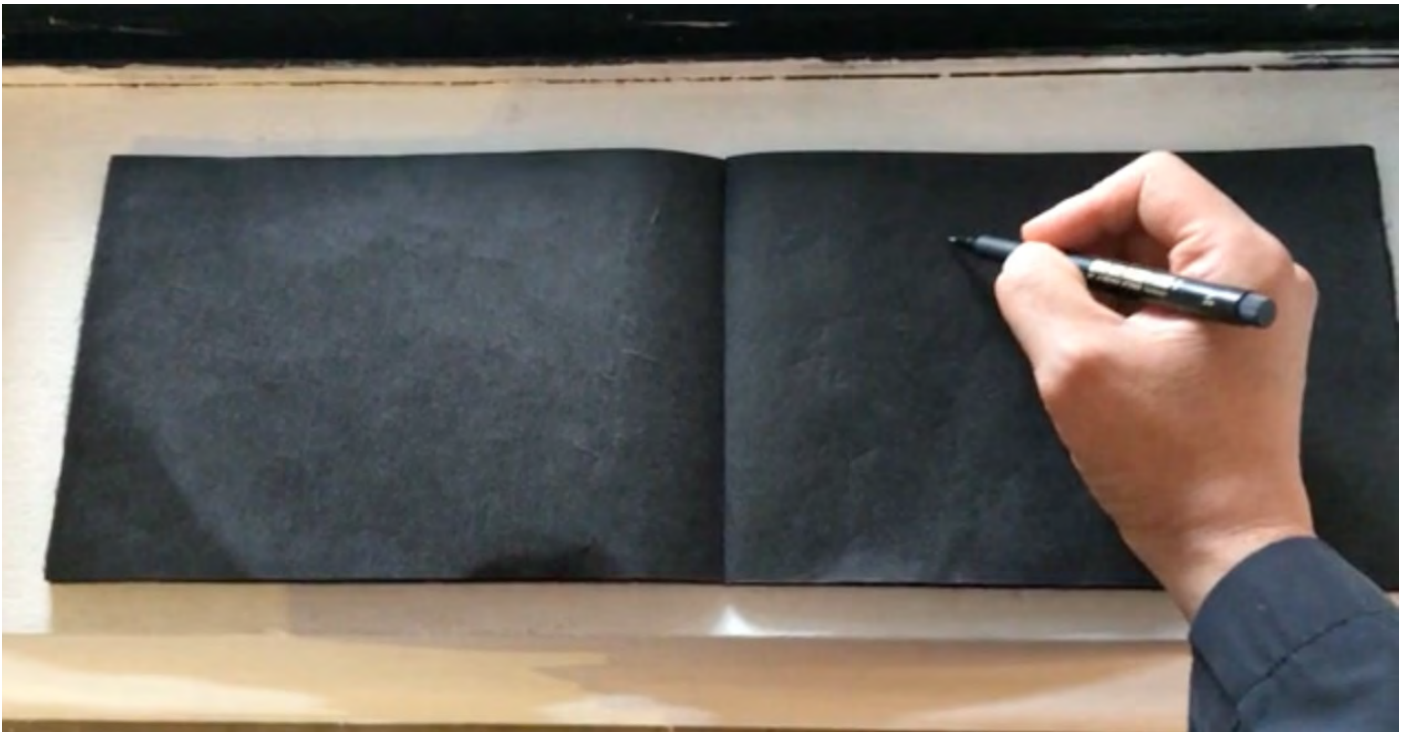
Within Arm's Length

2014

Second hand magazine, wooden frame

37 x 37 cm each

Unique pieces



Black Guest

2014

Book, black Korean paper, black PITT artist pen
Unique piece

Documentary in Gallery Factory, Seoul, South Korea, HD Video, color, sound



Floating words

2014

Light box billboards, sticker

450 x 143 cm

Unique pieces



The work at Night

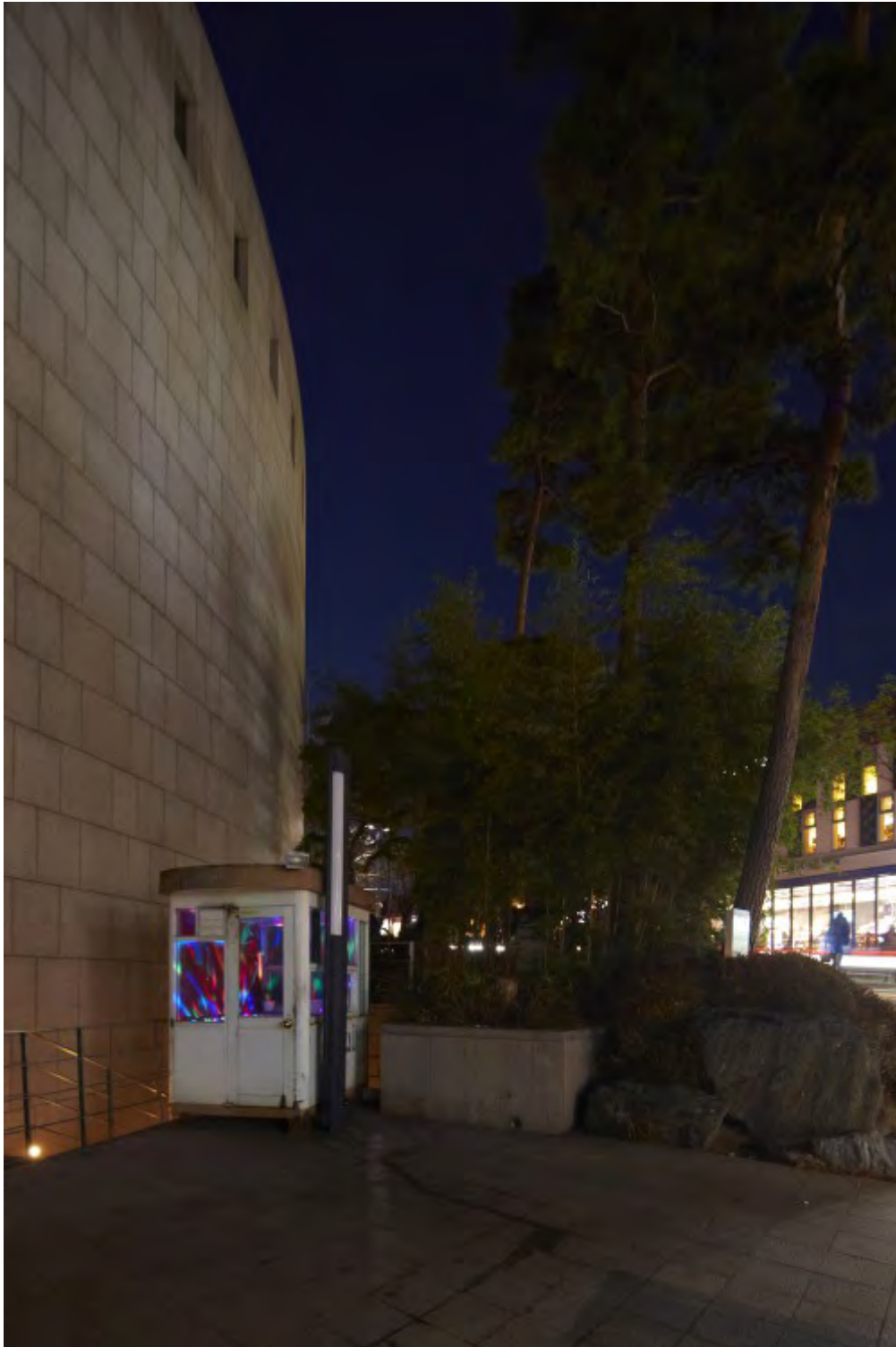
2014

Bonzai, magazine, lantern

Variable dimensions

Unique pieces





Party-time job

2014

Valet parking booth, disco ball, music
Arpeggione Sonata in A minor D.821 by Franz Schubert
Variable dimensions
Unique pieces





Welcome to doll house

2014

Inkjet print on OHP film, outdoor lightings

Variable dimensions

Unique pieces



Welcome to doll house

2014

Inkjet print on OHP film

22 x 7 x 6 cm

Edition of 3



When we look at both plants, they are different. We do not distinguish the real from the false. The real plant, the real harmony. The former one lives and dies step by step while the latter one lifeless remains eternal.

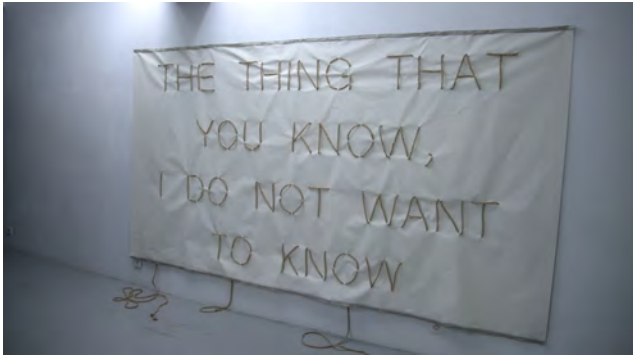
Twins

2014

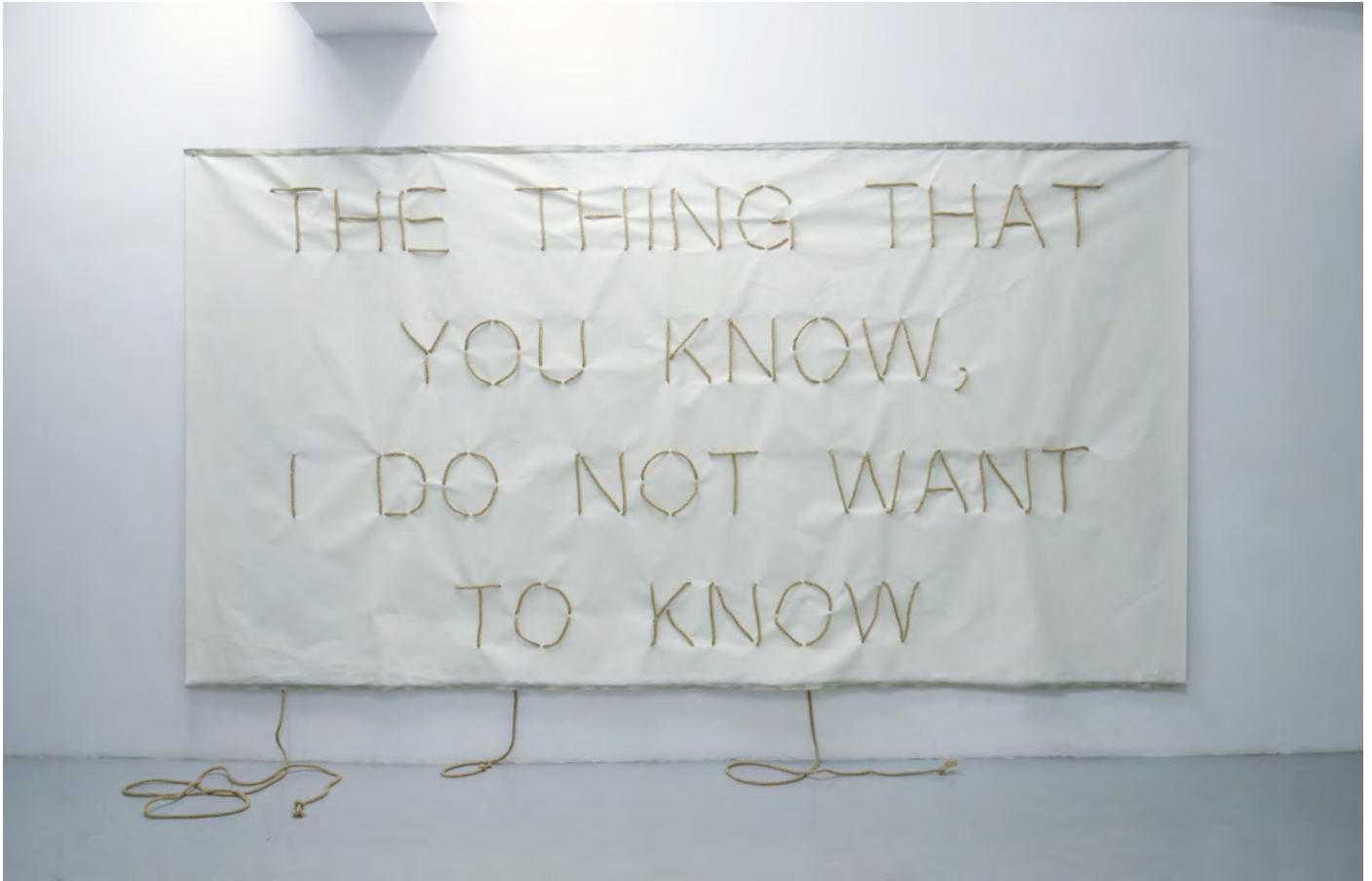
Plants, artificial plants

Variable dimensions

Unique pieces



THE THING (the thing that you know, I do not want to know)
2014
HD video documentray, sound, color
02'55"



These words written on the canvas might come from an intimate conversation between two people having a close relationship or from an individual who expresses his rejection of a State or a System. By pulling the rope, Rohwajeong distorts the sentence, which is then suspended in the void. These suspended words, now invisible will not disappear.

THE THING (the thing that you know, I do not want to know)

2014

Canvas, rope

Variable dimensions

Unique piece + Public performance



The surface of the milk makes the identity of this invading white surface. This milk foams thanks to a mixer, but amongst 7 minutes, the movie only remains clear for 2 to 5 seconds. The rest of the time, because of bubbles and off focus, we only might remain sceptical in front of what takes place on the screen.

Milk
2014
Video, color
07'49"
Edition of 3 + 2 AP



On the black screen, a hidden mountain range is gradually revealed by a white liquid fallen from the sky. This mountain range is made with some crumpled paper, mostly newspapers of conservative obedience, read by the parents of the artist. The artist painted in black articles to establish snowstorm scattered mountains.

The mountain evokes something absolute for the artist. Although a snowstorm falls and deforms the landscape, the mountain remains unmoving. Through this metaphor the artist wanted to show the various facets of the South Korean society.

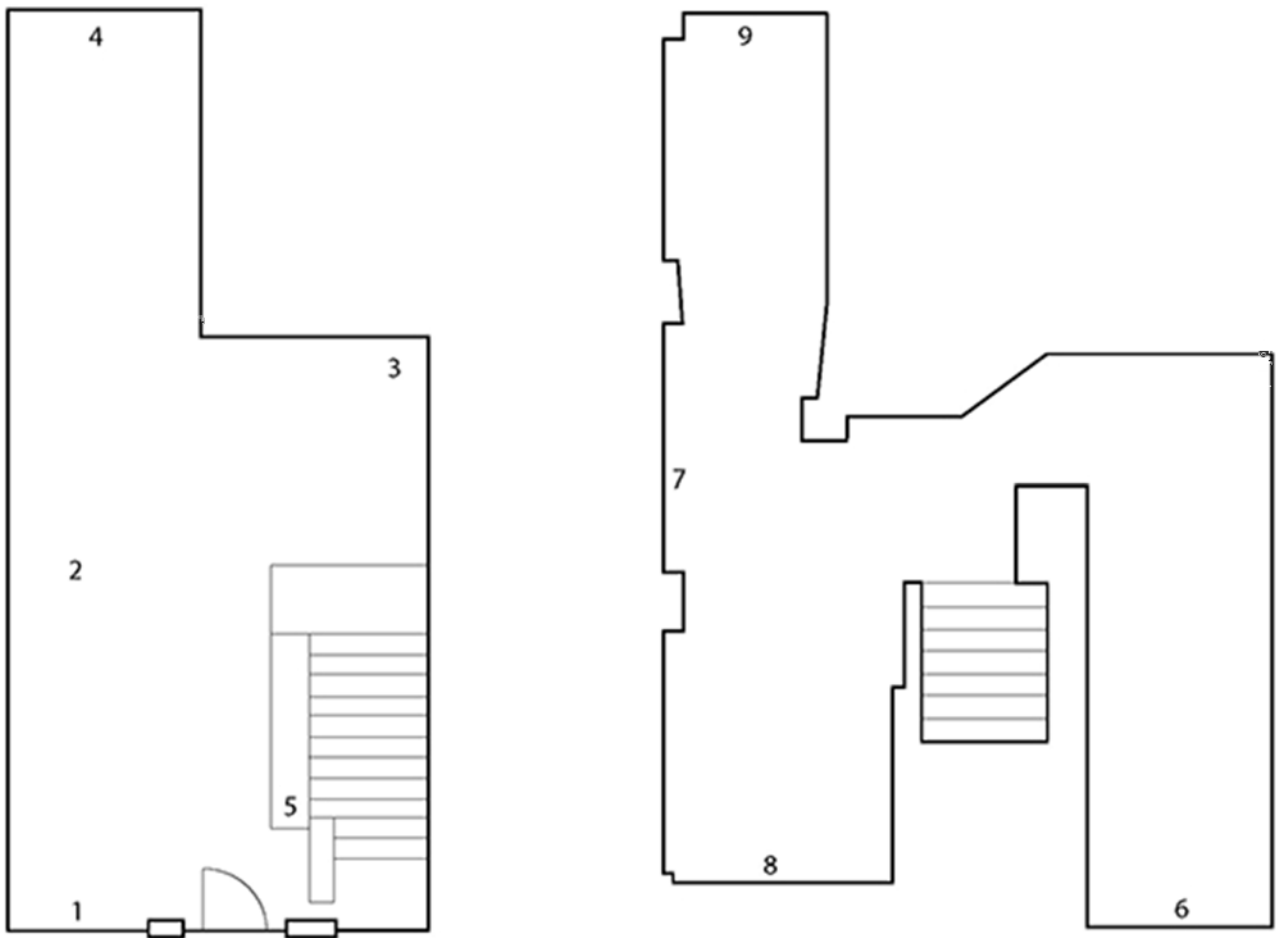
Black Mountain

2014

Video, color

02'13"

Edition of 3 + 2 AP



This artwork uses the plan of the gallery. If the spectator removes a sheet of the plan containing the information of the exposition, the artwork n°10 disappears. It re-appears only by the projection, and by its movement, **Time is disgusting** indicates the spectator can move it intentionally. This artwork only functions in specific places, and the sheet, constituting a part of the work, loses its function, when removed: it only becomes a simple plan of the gallery.

Moving - Missing link

2014

Screen projector, A4, 21 x 30 x 80 cm

Variable dimensions

Unique pieces



The nature contains time. However, the man and his vanity, by subtleties or inventions, tried to free itself from it. The drink can is one of these inventions. The can of this exhibition, silk-screened with an image of a man and a woman was emptied and deformed. We pass from objective time to subjective time. This same time trampled on and shot by the feet of spectators, rolling on the ground, spoilt and expressing the tiredness.

Time is disgusting

2014

Digital printing, can

Variable dimensions

Limited edition



A tree appearing on a newspaper was raised. However this tree is not real. Its trunk is made from a wooden post supporting a barbwired fence, and its foliage made from a piece of the background forest, intentionally cut. For a human point of view the fence makes the difference between a nature to be protected and the virgin one. By disappearing from our sight, this fence becoming a tree makes the border between both natures fading.

Tree of Boundaries

2013

Newspaper

42 x 29 cm

Unique piece



As a twin artwork of **Tree of Boundaries**, if it tried to show the porosity of the borders, in return *Cloud of Boundaries* tries to underline the borders.

If the trunk becoming tree contributed to shade off the border, what constitutes the border is the shape of the cloud. If the trunk made by the hand of the man shades off the borders, here the border is a shapeless cloud without outlines. The cloud on the image gives the impression the artist wants to separate ground from sky. However the cloud, could not establish itself as a physical border. Therefore each one of us makes his own notion of the border from a personal point of view on the nature.

Cloud of Boundaries

2013

Acrylic on second hand magazines

38,5 x 28,5 cm

Unique piece



Bye Bye is a work made with the chopping block the artist used. The inscription *Bye Bye* tells the story of the relationship between wood, and its manufactured shape the chopping block. It is also the story of this chopping block bound to the memories of the artist, and this object transformed into an artwork.

Bye Bye

2014

Wooden cutting board

33 x 21 cm

Unique piece



Hyunseok -> Heera

This is a collaboration work, made by the artist RohwaJeong, contemporary music-composer Heera Kim and the musician team Trio catch. It was made of messages rotation, for instance, one of the members gave his own message to another, and the next, the receiver also gave a specific message to someone else. This is about miscommunication and misunderstanding.

Rotation

2013

HD Video, color

20'40"

Edition of 3 + 2 AP



Melting

2013

2G cellular phones, Soju (Korean distilled spirits), jar

18,5 x 18,5 x 30 cm

Unique piece



Flow district

2013

HD Video HD, color, mute

07'13"

Collaboration with Jihee Kim

Edition of 3 + 2 AP



This project focuses on the collaboration of RohwaJeong & Jihee Kim, its synergy and possibility to go further on the process of idea sharing. The methodology of today's art making is evolving into various ways beyond traditional way of unitary artist system. This project explores new possibilities of outcomes by the collaboration of the Media Façade of Seoul Square.

Seoul Square is a skyscraper situated on the center of Seoul with the facade covered with LED lamps. For the project, RohwaJeong and Jihee Kim created and orchestrated the artwork with full consideration of the place, public, and even the inherent context of Seoul as Seoul-born artists. The artwork for this project, *Flow District*, is a sort of black humor regarding Seoul as a metaphor; it does not reflect the typical or superficial images of Seoul, but rather lightens the inner side of it. It is a story about mundane life of individuals in Seoul, as well as exploring the inner landscape of Seoul. Through the project, Jihee Kim and RohwaJeong will offer viewers multifaceted eyes of Seoul.

Flow district

2013

Projection on Media Façade of Seoul Square, Seoul, South Korea



Souvenir of somewhere (tree) detail

2013

Second-hand magazines

Variable dimensions

Unique piece



Souvenir of somewhere (tree)

2013

Second-hand magazines, table

90 x 400 x 90 cm

Unique pieces



The artist collected images from magazines or books showing the coexistence between the nature and the man. The photos of this work seem matified, what would often be true, but when looking closer, we realize that the outline was painted in white.

This shows the desire for the man, which does not possess the nature. This desire that urges man to draw landscapes or nowadays to photograph them. The artwork mixes these two techniques, but paradoxically the nature is already near us, these images settling on a part of this transformed nature, while recomposing it. By reshaping these images of the nature, the human civilization celebrates the integrated nature into the man.

Souvenir of somewhere (frame)

2013

Acrylic on second-hand magazines

Variable dimensions

Unique pieces



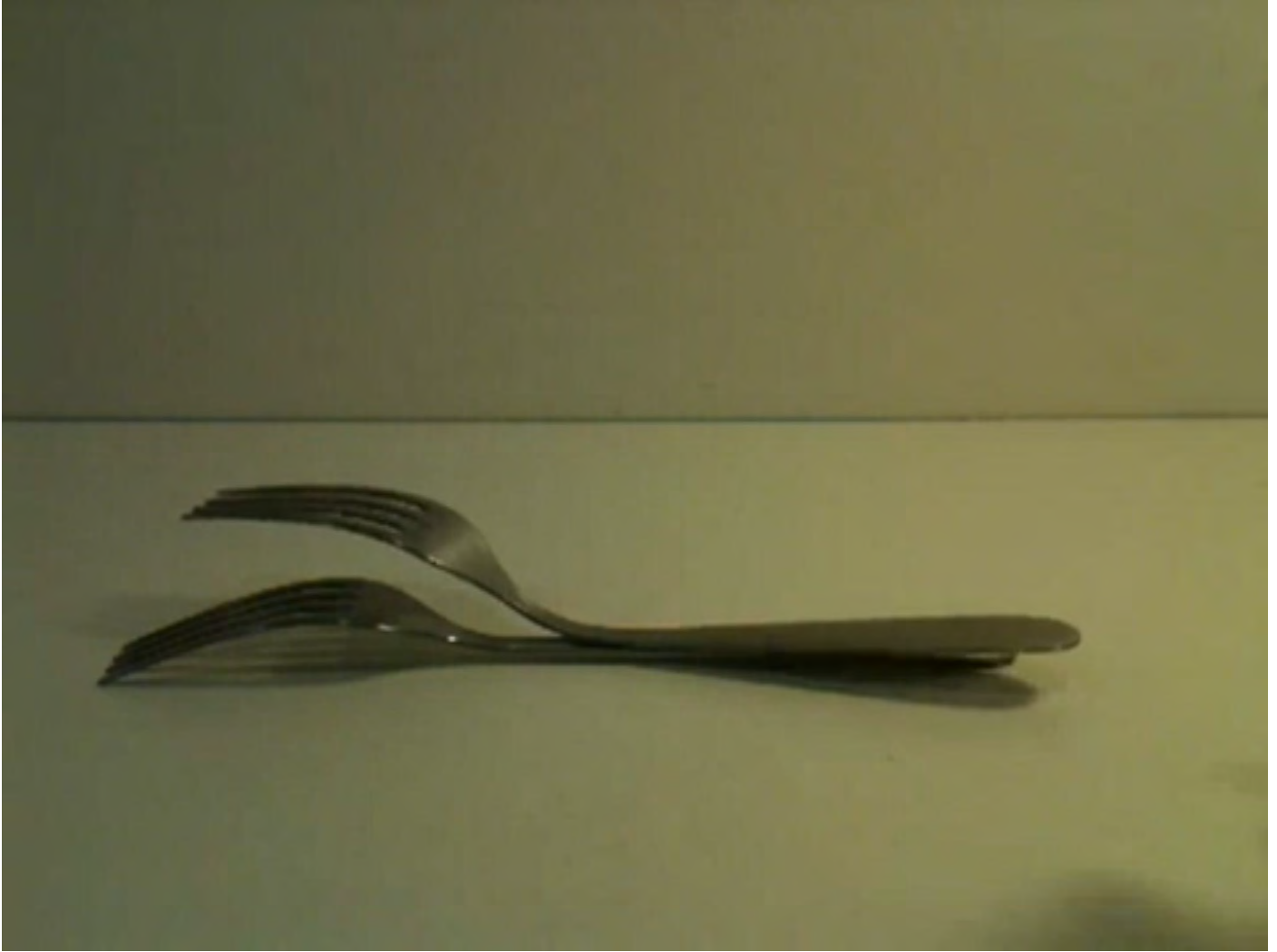
Souvenir of somewhere (frame) detail

2013

Acrylic on second-hand magazines

Variable dimensions

Unique pieces



Untitled

2013

Single channel video, sound, color, 0'56"
Edition of 2



Signature is one's own identity made with handwriting but also in art, it is another expression of the guarantee about specific art work. It talks about contradiction between the non commercial-oriented attitude and the desire of marketable work.

Signature

2013

Brush, carved dustpan, dust

50 x 50 x 10 cm

Edition of 2



It is a collection of the cardboard tube from the centre of a toilet roll in one year, and its original state before use.

Two different time

2013

Toilet paper, toilet paper cardboard tubes, wood holders

40 x 40 x 10 cm

Unique pieces



Self-portrait is a pretty important work since RohwaJeong actually consists of two persons, but it also refers to one identity. In other words, this chemical identity is influenced by each different time and atmosphere, so we expect various *Self-portrait* work series in the years ahead.

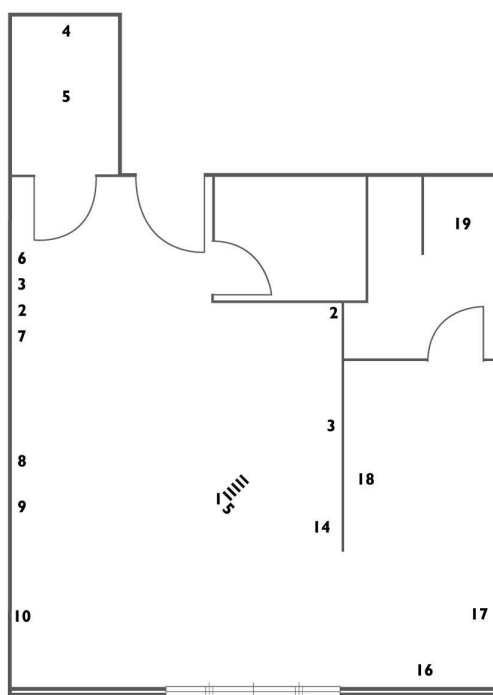
Self-portrait

2013

Video loop, colour, sound

01'46''

Edition of 2



It is a first work of the serie *Moving*. It is produced in different designs and narratives as per exhibition space. 1425 is RohwaJeong's atelier room number of the Cité internationale des arts, this talks about absolute and unchangeable power structure and authority system.

Moving - unchangeable 1425

2013

Video, colour

02'32"

Edition of 2

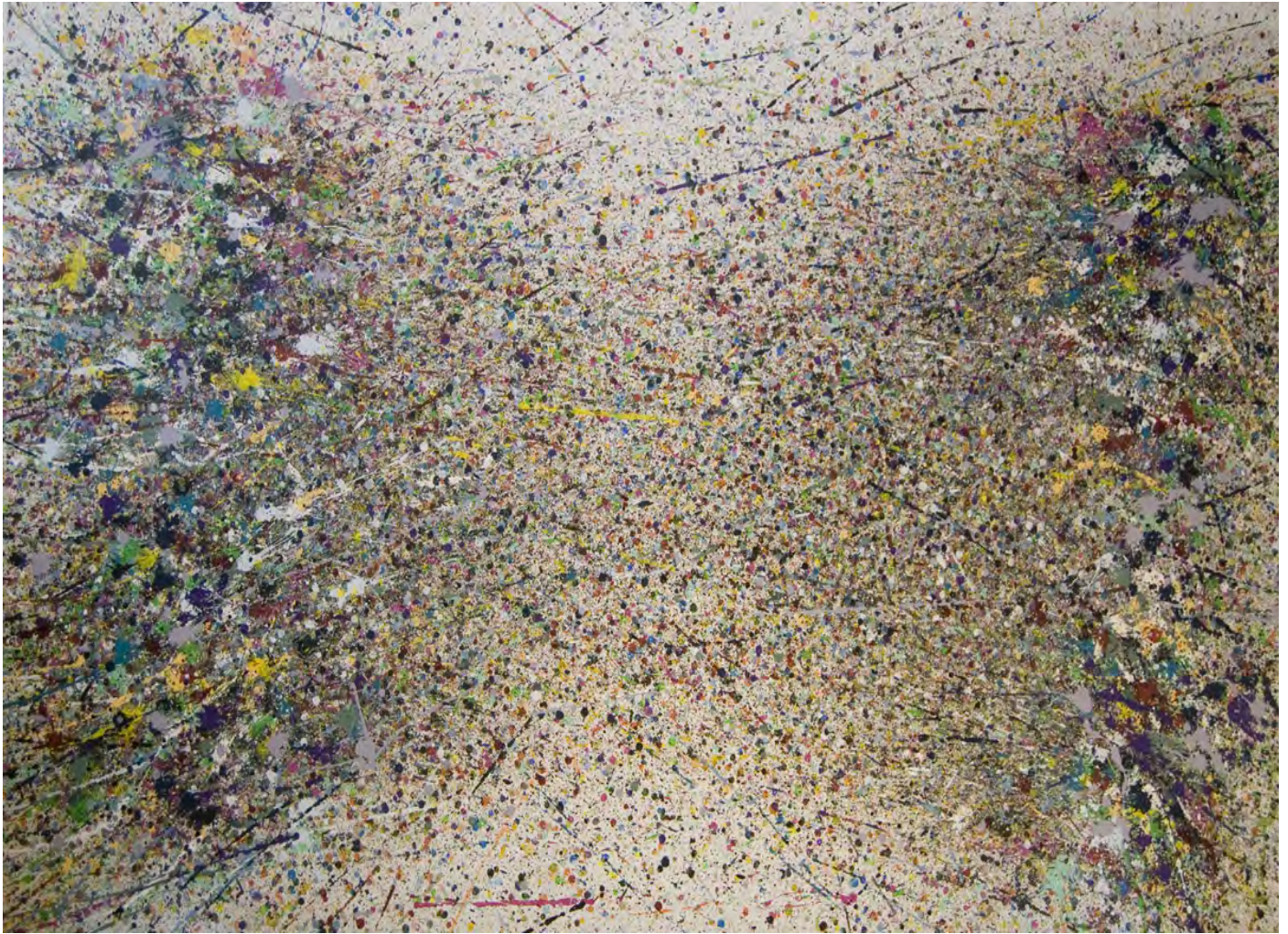


Untitled (Perfect lovers)

2010

Clocks, wood panel, 600 x 300cm

Unique pieces



It talks about what is between art and the artist daily life. Actually, it was made from our daily training playing table tennis with a painted ping-pong ball during 3 months of residency period. In other words, it is the accumulation of daily exercise that is turned into painting.

Between a and A

2010

Acrylic on canvas

260 x 135 cm

Unique piece



This is a set consisting of not only a painting but also a video. This is the documentary of a daily training but we also show ambiguity that exists between daily pattern and art.

Between a and A

2010

Video, colour, sound

02'07"

Unique piece



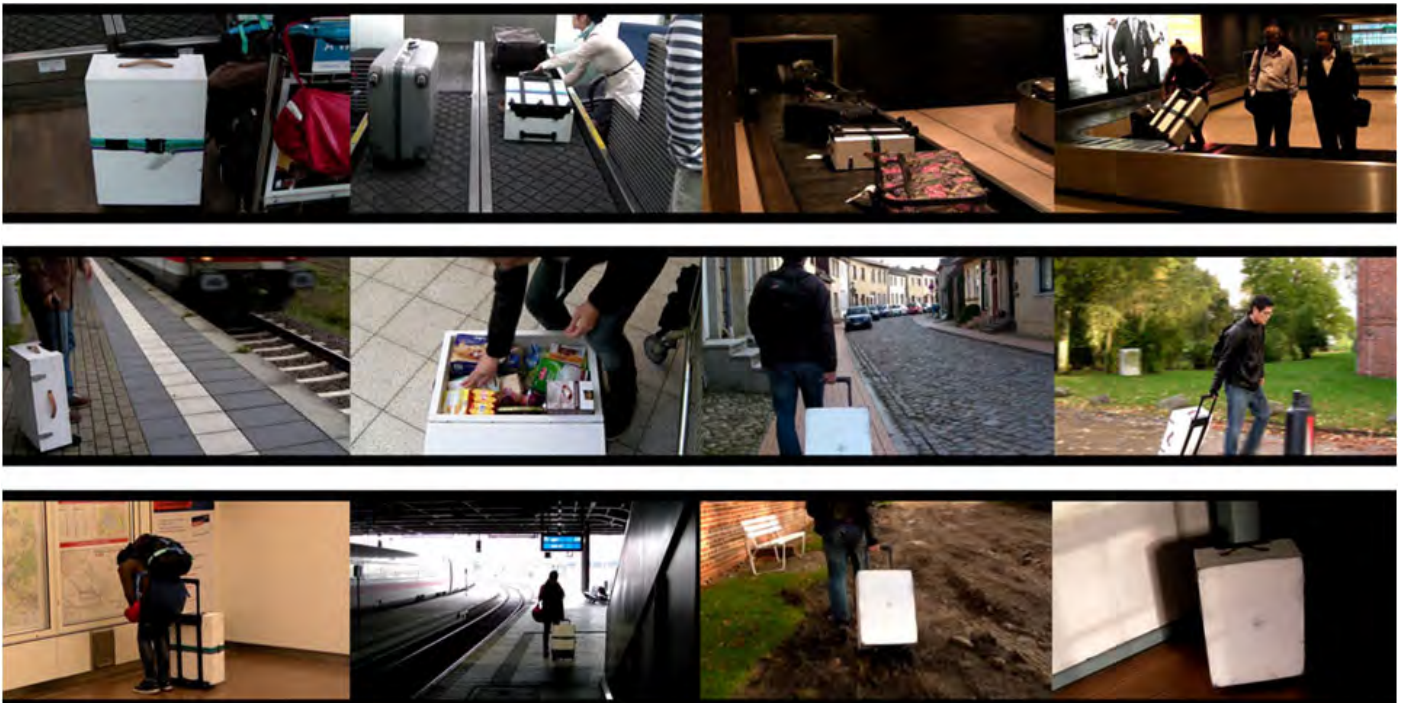
We called it surrounding paintings because each canvas was stained by dirt or dust of specific location. Actually, its original form was a suitcase. We had used it during our residence program period, and in the end, it was separated into six pieces and shown as painting works.

86 days packed

2010

Canvas panel, mixed media

40 x 55 cm x 1 pair, 55 x 15 cm x 1 pair, 35 x 15 cm x 1 pair



It is also made of paintings and a video. This is a documentary filmed during the 86 days of our residency period in Germany. The six suitcases are then shown as painting works.

86 days packed

2010

Video loop, colour, sound

14'21"

Unique piece



It is made of two panties and a small lamp. We express a wish to be honest about primary desires.

Wanna be happy every night

2010

Installation, panties, lamp

40 x 40 x 40 cm

One pair

Edition of 3



It talks about what there is between art and the artist daily life. All this stuff is our personal objects in use, so during the exhibition period (three months), we couldn't live as before. In other words, we should shift the pattern of daily life or lay it down for the exhibition. Ironically, it makes us feel break away from the routine of daily life, accordingly we express mental nomadic life with thin black masking tapes.

The discovery of living

2010

Installation, masking tape, personal objects in use

550 x 550 x 350 cm



Self portrait

2009

Two pencils with eraser tip, birch plywood, 30 x 30 x 3 cm
Unique piece



It expresses the fact that society consists of several different kinds of relationships. It talks about natural clashes in relationships and mutual understanding as time pass by.

Das Leben Der Anderen

2009

Video loop, colour, sound

3'36"

Edition of 5 + 2 AP



In constant motion between two persons is desire to get rid of some sticky piece of transparent adhesive tape.

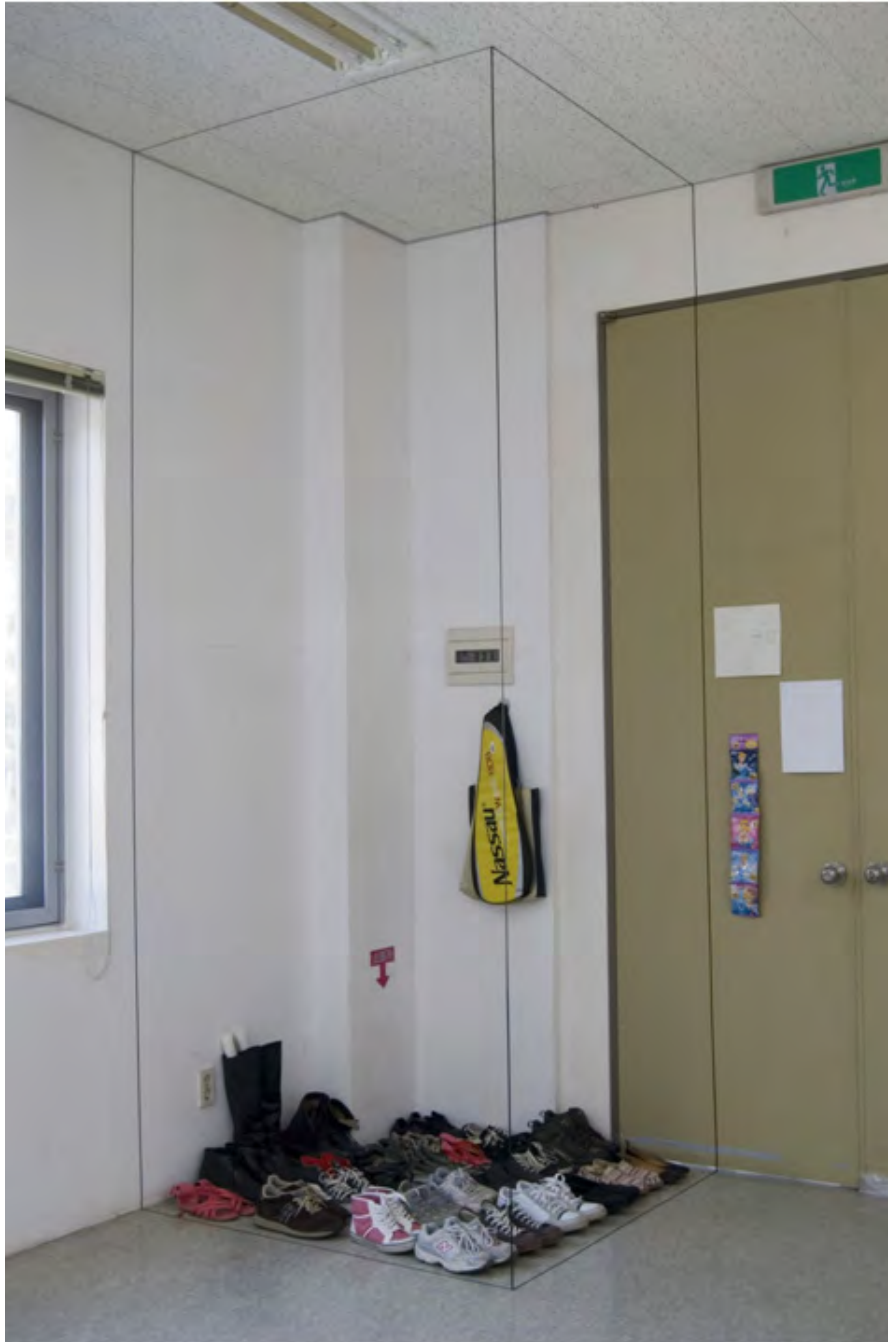
Grow up

2009

Video loop, colour, sound

0'15''

Edition of 5 + 2 AP



It shows the artist daily life transformed into art works by minimum installation with thin black masking tape.

Untitled (Space drawing)

2009

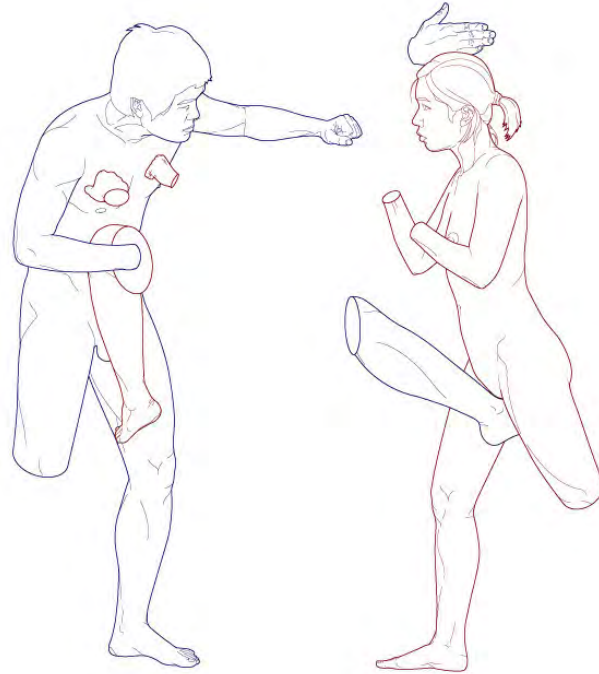
Installation, masking tape, personal objects in use
900 x 600 x 300 cm



Untitled (Space drawing)

2009

Installation, masking tape, personal objects in use
900 x 600 x 300 cm



Two people just seem to fight but also they complement each other that exchange their own body parts. They eventually grow together into one, but it is an unstable fusion of interdependence.

Fighting

2008

Video, colour

2'04" loop

Edition of 5 + 2 AP



The inner shape of the case is a dryer and a water sprayer. We express our self-portrait with this work. RohwaJeong is an artist composed of two persons who keep on arguing endlessly. It likes fighting of fire (dry) and water (wet).

Self portrait

2008

Aluminium gun case, cutting sponge

28 x 70 x 20 cm

Edition of 2



The *Costume Series* of four pieces make easier things that can happen between two people who are in specific situations. *We need talk* is used when two people have a conversation although they like to avoid it, *Private moment* is a cloth to put on in a common space for personal need of private time. *Trunk* and *Warm sleep* are for convenient moments when a couple sleeps.

Warm sleep

2007

C-print

76 x 101 cm

Edition of 2 + 2 AP



We need talk
2007
C-print
50 x 40 cm
Edition of 5 + 2 AP



Private moment
2007
C-print
50 x 40 cm
Edition of 5 + 2 AP



Trunk
2007
C-print
50 x 40 cm
Edition of 5 + 2 AP