

ARTWORKS LIST //
LES PAYSAGES MULTIPLIANTS DE
DUAL

galerie dohyanglee

Les paysages multipliant de Dual

An exhibition of the artworks by **NATALIA VILLANEUVA LINARES**

03.05 – 07.06.2025

ARTWORKS LIST



1. PALETTE OF DUAL ^{11.2}

2023 - 2025

675 coloured wrapping tissue bricks, 89 x 130 cm, unique piece

Film by Phil Aronson, colour, sound, 7'28", edition of 5 + 2 AP, 2024. Edited by Derek Schleelein

Performance *Lands of Dual* ^{11.1} in the School of Art Gallery, University of Manitoba, Winnipeg, Canada, 2023

Performance *Lands of Dual* ^{11.2} in the Heaven Gallery, Chicago, Illinois, USA, 2024

Dual ¹¹ is a large patchwork composed of 147 units of hand-sewn paper in 2023, presented in the School of Art Gallery, University of Manitoba, Winnipeg, Canada. The performance *Lands of Dual* ^{11.1}, that followed this artwork and whence comes the architectural landscape *Lands of Dual* ^{11.1} has been the topic of a film by Sean Guezen. Another performance *Lands of Dual* ^{11.2} in the Heaven Gallery, Chicago has been filmed by Phil Aronson in 2024.

Dual is the name of a series of huge patchworks made of wrapping tissues, carefully hand-sewn. These patchworks are a multipliant and expansive quantity of gestures spread over time, calculated by colors, as temporal units.

Palettes of Dual are these large patchworks transformed into a set of colored paper bricks, during performative experiences lived alone or with several participants.

Natalia Villanueva Linares



galerie dohyanglee



2. NOVA DUAL ^{LIMA.1}

2021 - 2024

54 coloured wrapping tissue bricks, 27 x 14 x 5 cm, unique piece

Photography of the performance *Nova Dual* ^{Lima.1}, 51,5 x 91,5 cm, edition of 5 + 2 AP

Film by Alan Poma, colour, mute, 04'56", edition of 5 + 2 AP, 2024

Performance *Nova Dual*, Wu Gallery, Forecourt of Centre Pompidou, Paris, France, 4 persons, 2021

Performance *Nova Dual* ^{Lima.1} in Redondo beach in Lima, Peru, 2024



By crumpling paper we add milligrams of time, a life time. Our sensitivity unites us with a gesture to the matter. These palettes of gestures are color ranges made of time + colored tissue paper mixed with water from different sources: ocean, lake, rain, snow. Water allows the paper to be shaped into coloured bricks and adds to the palette of uniqueness, a place of origin.

Natalia Villanueva Linares



3. POÉMATIQUE XL⁸

2024

Kraft paper, acrylic paint, 122 x 71,5 cm, unique piece

A system of symbols to compose performative gesture scores. These are illustrations that contain the power to be played as scores, individually or during participatory actions with many, to transform matter.

Natalia Villanueva Linares



4. SISTERS

2014

Installation, 1 metal box, thread spools, variable dimensions, unique piece

Each sister is a metal box of a different color and size. They are typical recipe boxes used in the Midwest of the United States and popular in the 1950s. The opened boxes are on an eye level shelf, each contains a quantity of used wooden thread spools. The threads of each come out from the box to meet at a singular point nailed to the wall thirty centimeters high from each box. This gesture allows to show the content of each, the most thin and colorful they have.

Natalia Villanueva Linares



5. PALETTE OF DUAL⁸

2022

100 coloured wrapping tissue bricks, 33 x 51 cm, unique pieces

Photography of the performance *Poemáticas de Dual⁸*, 11 x 15,2 cm, edition of 5 + 2 AP

Presentation and performance *Poemáticas de Dual⁸* in the exhibition *pARTages* organised by Artàis Art Contemporain, Paris, France, 2022

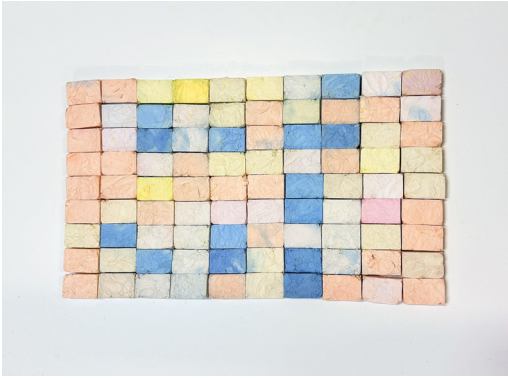
Dual⁸ is a large patchwork composed of 100 units of hand-sewn paper in 2022, presented in Paris during the *pARTages* exhibition organized by Artàis Art Contemporain under the curatorship of Maya Sachweh and Sylvie Fontaine. The units were divided into 2 parts: one with 5 people, and a second with 4 other people. During a final performance, one by one, the units were placed in water to create a row of gestures.

Dual is the name of a series of huge patchworks made of wrapping tissues, carefully hand-sewn. These patchworks are a multipliant and expansive quantity of gestures spread over time, calculated by colors, as temporal units.

Palettes of Dual are these large patchworks transformed into a set of colored paper bricks, during performative experiences lived alone or with several participants.

Natalia Villanueva Linares





6. *PALETTE OF DUAL* ⁶

2020 - 2023

90 coloured wrapping tissue bricks, 53,34 x 30,48 cm, unique pieces

Photography of the performance *Poemáticas de Dual* ⁶, 15,2 x 9,7 cm, edition of 5 + 2 AP

Presentation in the Thaddaeus Ropac Gallery, Pantin, France, 2020

Performance *Poemáticas de Dual* ⁶, Fortuna, Chicago, Illinois, USA, 2020

Participative performance *Poemáticas de Dual* ⁶ in the Cité Internationale des Arts, Paris, France, 2021

Transformation in gesture pallets in Loghaven, Knoxville, Tennessee, USA, 2023

Dual ⁶ is a large patchwork composed of 90 units of hand-sewn paper presented at the Thaddaeus Ropac Gallery in 2020. Then, the 90 units were cut during a participatory performance with 4 persons at the Cité des Arts Internationale in 2021. They have been transformed into sets of small paper bricks in 2023 in a residency in Longhaven, Tennessee.

Dual is the name of a series of huge patchworks made of wrapping tissues, carefully hand-sewn. These patchworks are a multipliant and expansive quantity of gestures spread over time, calculated by colors, as temporal units.

Palettes of Dual are these large patchworks transformed into a set of colored paper bricks, during performative experiences lived alone or with several participants.

Natalia Villanueva Linares



galerie dohyanglee

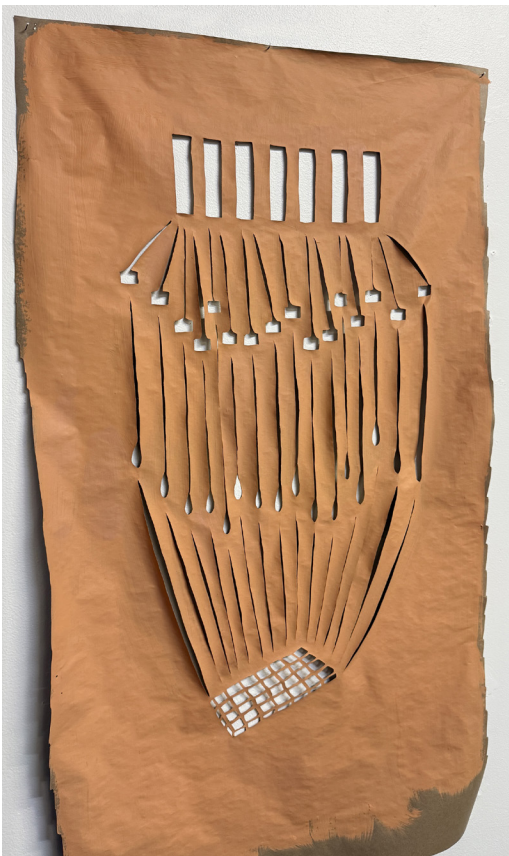


7. *DUAL ICE* ^{STORM.2.1}

2022

Installation, 15 glass jars filled with melted snowballs colored during a performance, variable dimensions, unique pieces

Performance in Chicago, Illinois, USA, 2025



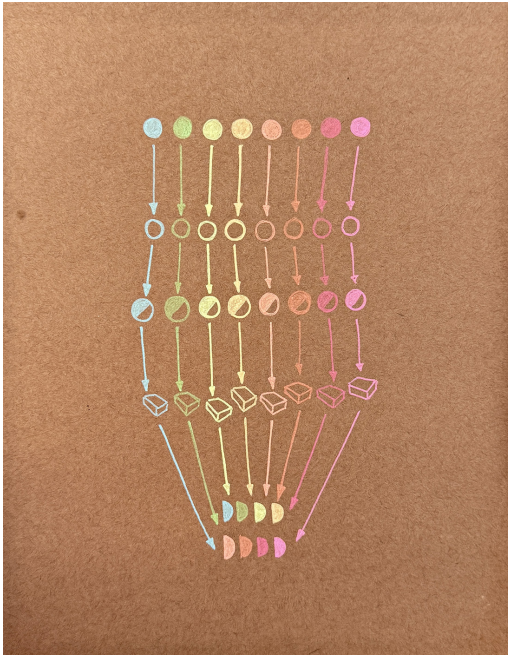
8. *POÉMATIQUE XL*⁶

2024

Kraft paper, acrylic paint, 109 x 67 cm, unique piece

A system of symbols to compose performative gesture scores. These are illustrations that contain the power to be played as scores, individually or during participatory actions with many, to transform matter.

Natalia Villanueva Linares



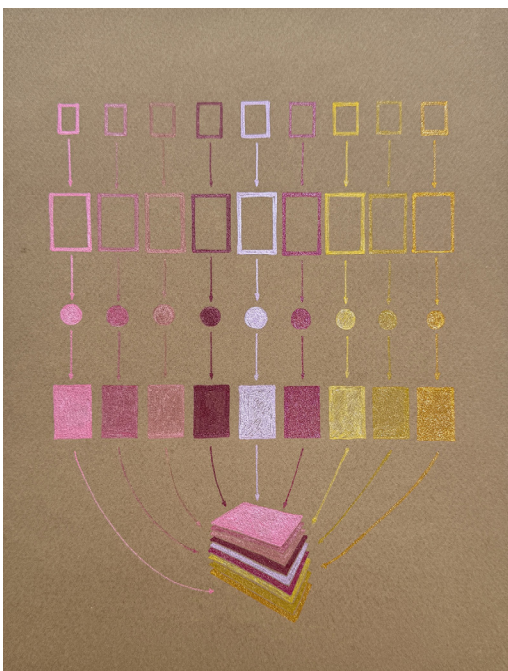
POÉMATIQUE DUAL ICE

2021

Kraft paper, coloured metal ink, 26 x 20 cm, unique piece

A system of symbols to compose performative gesture scores. These are illustrations that contain the power to be played as scores, individually or during participatory actions with many, to transform matter.

Natalia Villanueva Linares



POÉMATIQUE NOVA DUAL

2021

Sand coloured paper, coloured metal ink, 28 x 21,5 cm, unique piece

A system of symbols to compose performative gesture scores. These are illustrations that contain the power to be played as scores, individually or during participatory actions with many, to transform matter.

Natalia Villanueva Linares

galerie dohyanglee



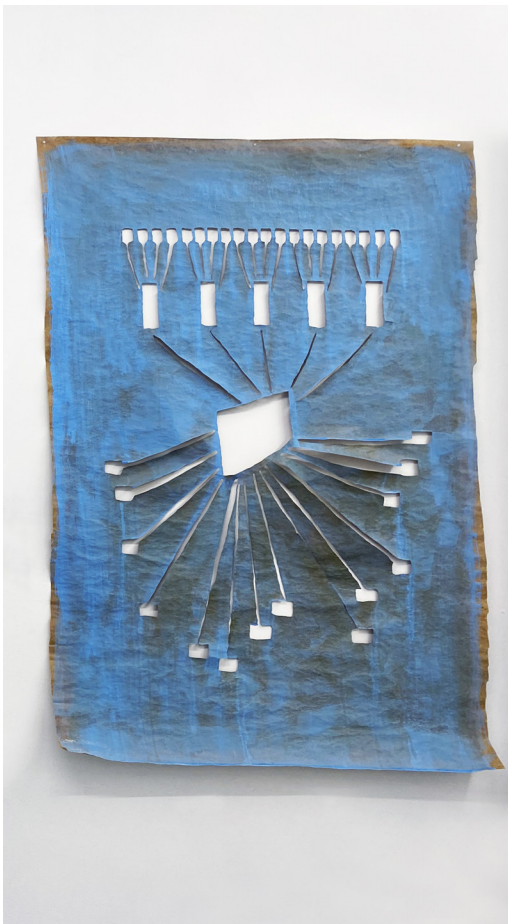
POÉMATIQUE XL^{8.1}

2024

Kraft paper, acrylic paint, 122,5 x 66,5 cm, unique piece

A system of symbols to compose performative gesture scores. These are illustrations that contain the power to be played as scores, individually or during participatory actions with many, to transform matter.

Natalia Villanueva Linares



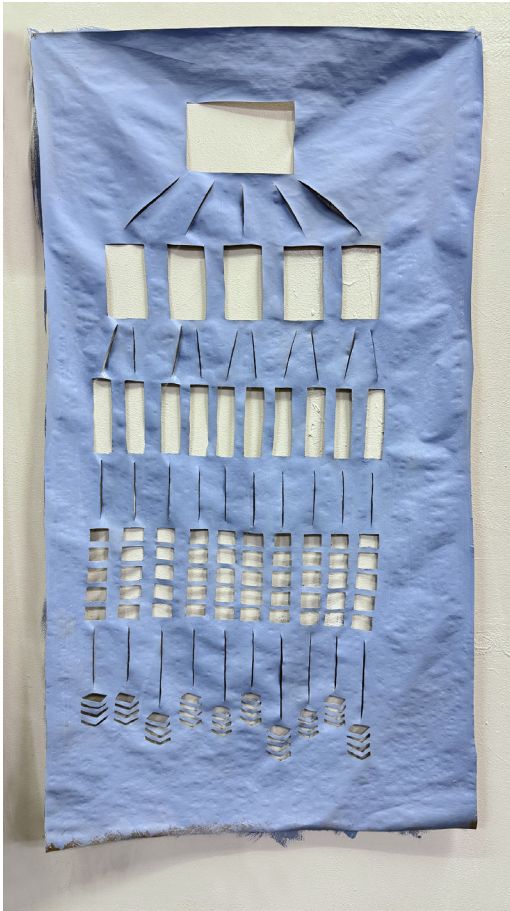
POÉMATIQUE XL¹¹

2024

Kraft paper, acrylic paint, 122 x 82 cm, unique piece

A system of symbols to compose performative gesture scores. These are illustrations that contain the power to be played as scores, individually or during participatory actions with many, to transform matter.

Natalia Villanueva Linares



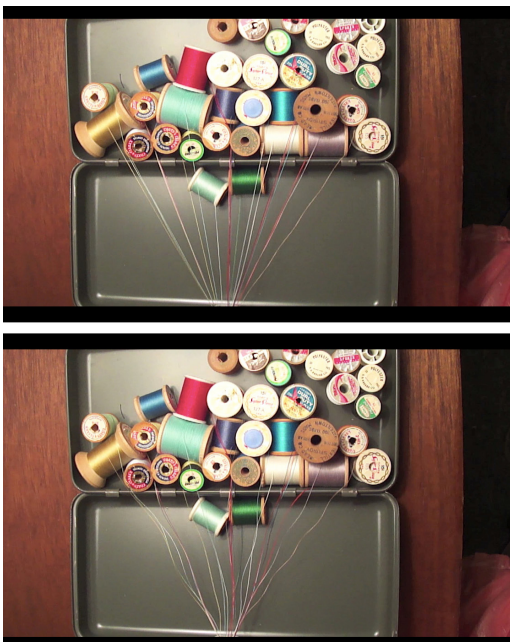
POÉMATIQUE XL^{11.1}

2024

Kraft paper, acrylic paint, 122,5 x 66,5 cm, unique piece

A system of symbols to compose performative gesture scores. These are illustrations that contain the power to be played as scores, individually or during participatory actions with many, to transform matter.

Natalia Villanueva Linares



BREATHING

2013

16 : 9 HD Video, colour, sound, 10'09"

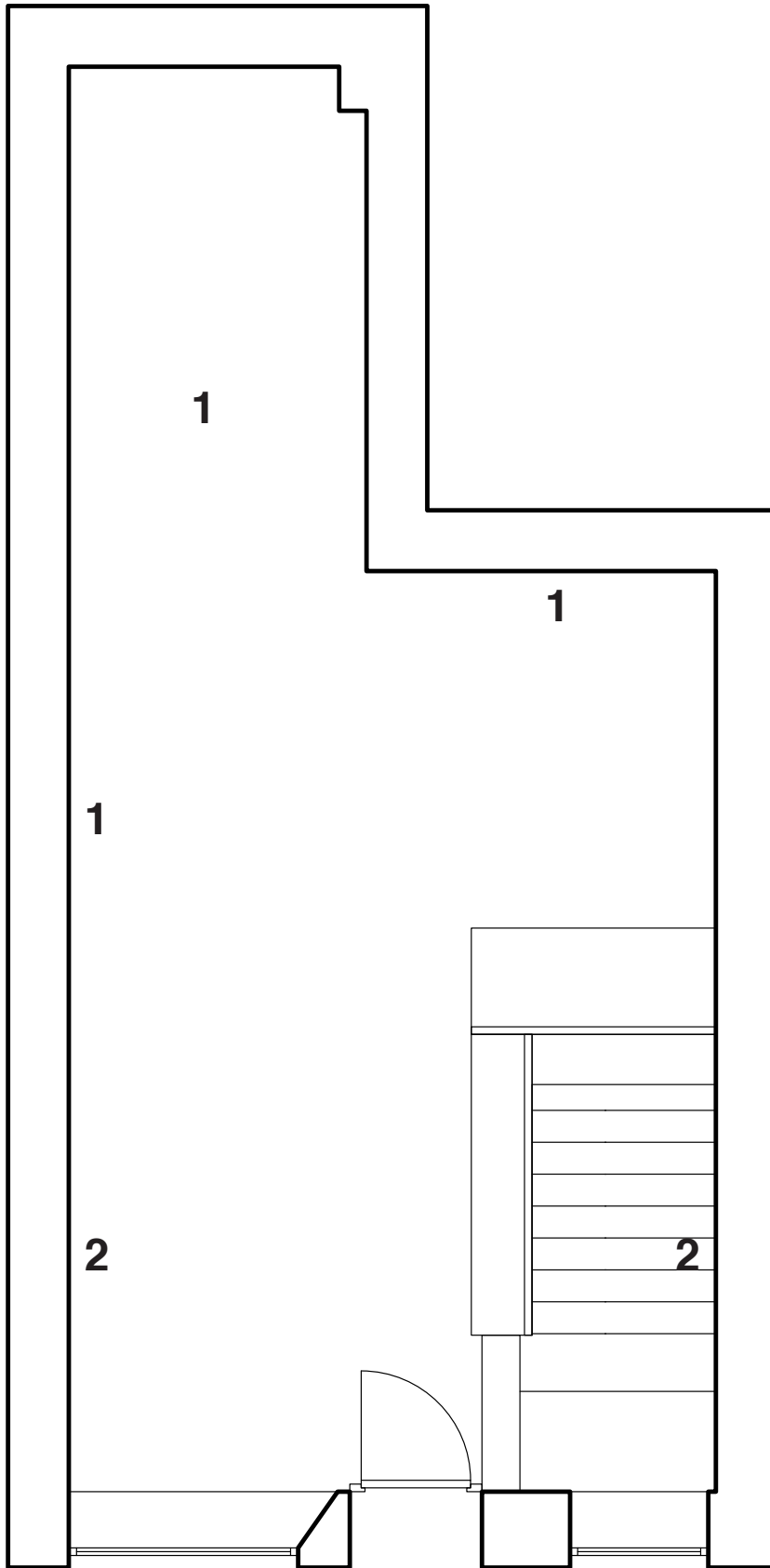
Edition of 5 + 2 AP

34 spools of sewing thread in a metal box are united by an action that takes place outside the frame. An abundance of repetitive gestures pulls on the threads of colors to multiply them; followed by a sound that evokes a meticulous transformation of the whole. The film *Breathing* captures, wick by wick, the creation of the piece *Sister n°0*. It is a meeting between the generosity of the object, its history and the gaze of the passer-by. The action is vital to the future of the piece and reveals the symbolic nature of the materials that are offered little by little, transform into writing, hidden from view but with a strong sensitive evidence.

Natalia Villanueva Linares

High level

- 1. PALETTE OF DUAL ^{11.2}
- 2. NOVA DUAL ^{LIMA.1}



Low level

- 2. NOVA DUAL LIMA.1
- 3. POÉMATIQUE XL ⁸
- 4. SISTERS
- 5. PALETTE OF DUAL ⁸
- 6. PALETTE OF DUAL ⁶
- 7. DUAL ICE STORM.2.1
- 8. POÉMATIQUE XL ⁶

